

## CONTENTS

<b>CONTENTS .....</b>	<b>1</b>
<b>SAFETY INSTRUCTIONS.....</b>	<b>2</b>
<b>INTRODUCTION.....</b>	<b>2</b>
<b>HARDWARE APPEARANCE AND CONNECTIVITY .....</b>	<b>4</b>
<b>SETUP INSTRUCTIONS .....</b>	<b>5</b>
<b>IMPORTANT NOTES: .....</b>	<b>19</b>

# SAFETY INSTRUCTIONS

Keep this user's manual for future reference.

Keep this equipment away from humidity.

Put this equipment on a flat surface before setting it up.

If any of the following situations arises, contact Medion Customer Care immediately:

- The equipment has been exposed to moisture, or
- The equipment has been dropped and damaged, or
- The equipment has obvious sign of breakage, or
- The equipment malfunctions or you cannot get it to work after following the advice in this manual.

## INTRODUCTION

This USB Docking Station is an expansion unit designed to provide additional connectivity for a notebook or desktop PC. It uses only a single USB port and supports USB, convential parallel, serial, LAN and PS/2 peripheral devices. It also provides connectivity for multiple USB 2.0 peripherals. It is fully backwards compatible with USB Revision 1.1 products – you can use it to connect to older USB 1.1 products. You can add additional hubs and devices, connecting as many as 127 total devices. Furthermore, the MD 42495 provides a direct USB-to-USB data exchange channel between two computers (notebook and/or desktop).

### ***Power Supply***

There are two power supply options for USB peripherals: Self-powered and Bus-powered. A Self-powered peripheral has its own power adapter, and is plugged into a power socket. A Bus-powered device operates on the power from the port it is plugged into (for example, memory sticks are Bus-powered).

The MD 42495 can operate using either USB Bus-power or in Self-power mode. However, when it is operating on Bus-power, the devices plugged into it are only permitted to use a small amount of power. When the MD 42495 is in Bus-power mode, each device plugged into it can only receive up to 100 mA (milliamps) of power. Devices with a power demand higher than 100 mA will not function properly (for example, most USB scanners or multi-function peripherals will need more power). It is recommended that you operate this

docking station in Self-power mode when possible. Use the MD 42495 in USB Bus-power mode only with low power-consumption devices.

## ***System Requirements***

The MD 42495 is designed to work under Microsoft® Windows® XP, Windows® 98SE, Windows® ME or Windows® 2000. The hub driver is in all of these OSs (operating systems). The USB-PS/2 uses the "human interface device" (HID) driver in these OSs. The drivers for the rest of the peripheral ports are provided on the CD-ROM which came in your box. These drivers need to be installed before the other ports will work.

**NOTE:** The USB-LAN port does not function under Windows® 98SE or Windows® ME due to driver incompatibilities.

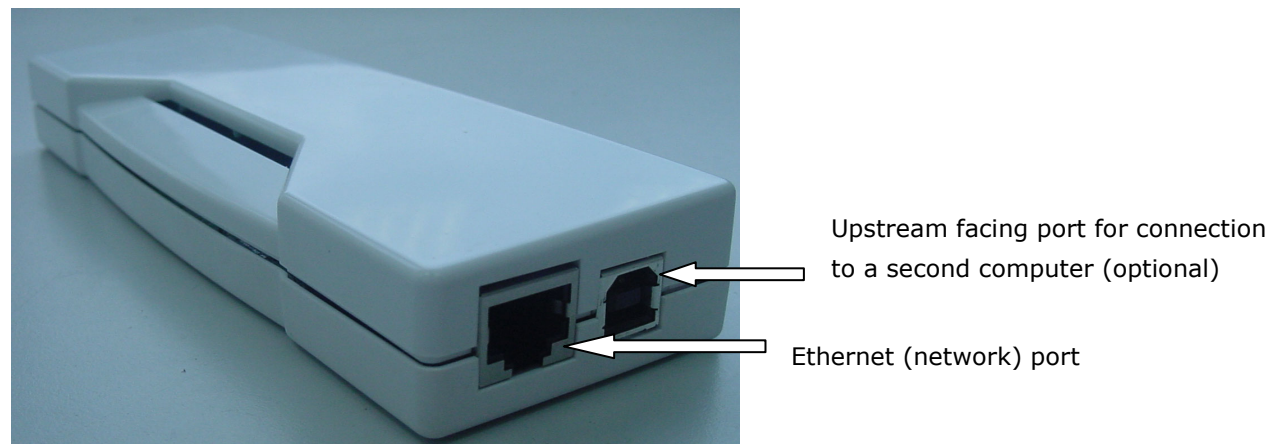
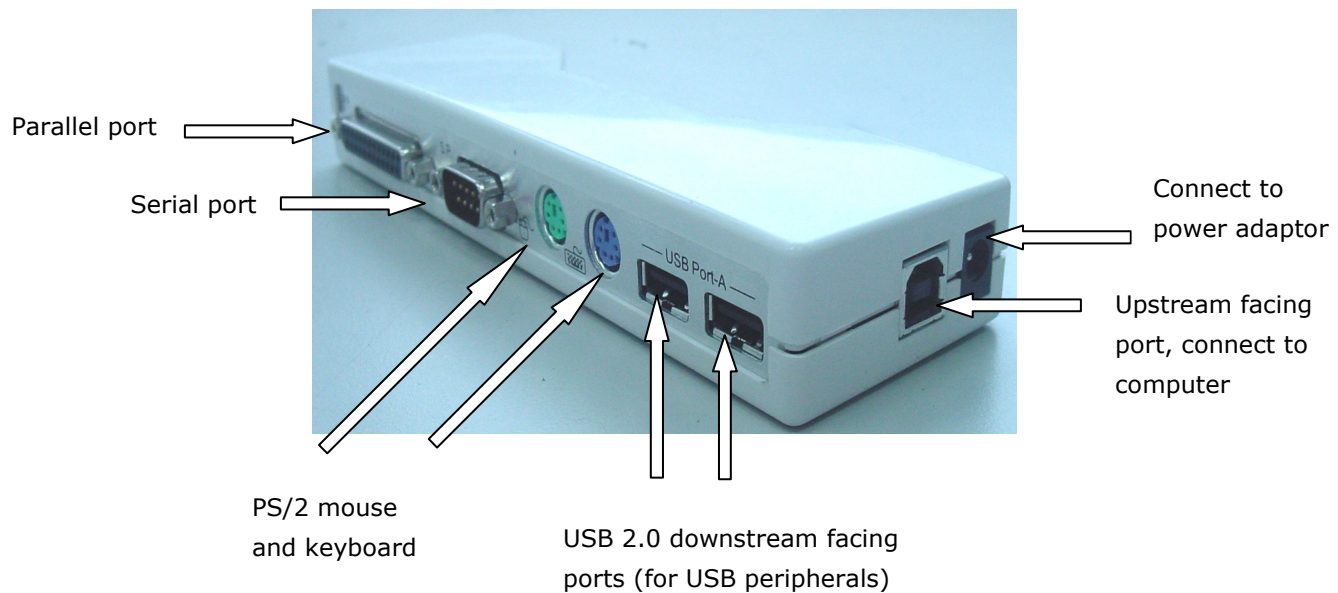
## ***Specifications***

Model No.	MD 42495
Computer Port	One upstream facing port
I/O Ports	Two USB 2.0 downstream facing ports
	One PS/2 Keyboard port
	One PS/2 Mouse Port
	One serial port
	One parallel port
	One 10/100 Ethernet port
	CE, FCC
Power	AC Input 100 V~240V
	DC Output 5V, 2.5A
Environments	Operating temperature: 32°F - 94°F
	Storage temperature:
	14°F - 170°F
	Humidity: 90% (w/o condensation)

# HARDWARE APPEARANCE AND CONNECTIVITY

### LED Status Indicators

LEDs	Color	Descriptions
1	Red	Turned on when the docking station is powered.
2	Blue	Turned on when host detected and ready.
2	Blue	One for LAN activity: it will turn on and flash when there is data flow between LAN and your computer. One for LAN type: it will turn on when your connection is 100Mbps.



## SETUP INSTRUCTIONS

1. Connect the power adapter to an AC outlet. Plug the adapter's DC jack into the DC socket on the side of docking station.
2. Put the device driver CD-ROM in your CD-ROM drive.
3. Plug the flat end of the USB cable into a free USB port on your Notebook or PC.
4. Plug the square end of the USB cable into the USB upstream connector located on the side of docking station.
5. At this point, Windows® will automatically find the docking station and start installing its drivers. Windows® will prompt you during the driver installation process. See the next section for details on how to install the drivers.

Please make sure that your computer and the docking station are turned on. Make sure the docking station is connected to the computer's USB port with a USB 2.0 cable (included in the package). The computer will start the driver installation process automatically. If this is the first time that a docking station has been connected to the computer, Windows® will proceed to install all the required drivers. It will also prompt you if input is needed. The driver installation process is only needed the first time the docking station is connected to a computer.

## ***Software Installation***

For Windows® 98SE and Windows® ME, the processes are very similar to those illustrated for Windows® 2000. Follow the prompts on the screen.

Please make sure the driver CD-ROM is placed in the CD-ROM drive before proceeding.

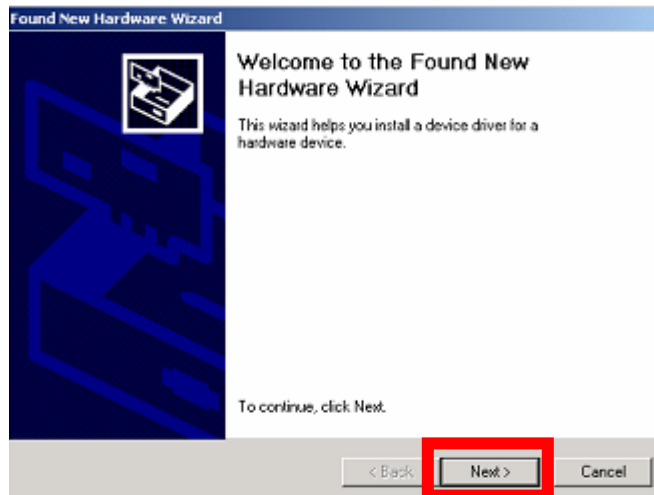
### **USB 2.0 Installation in Windows® 2000**

Your computer will need the USB 2.0 host controller driver. Depending on the motherboard of computer, the steps below may or may not be needed. If the host driver is already present on your machine, these steps will be skipped.

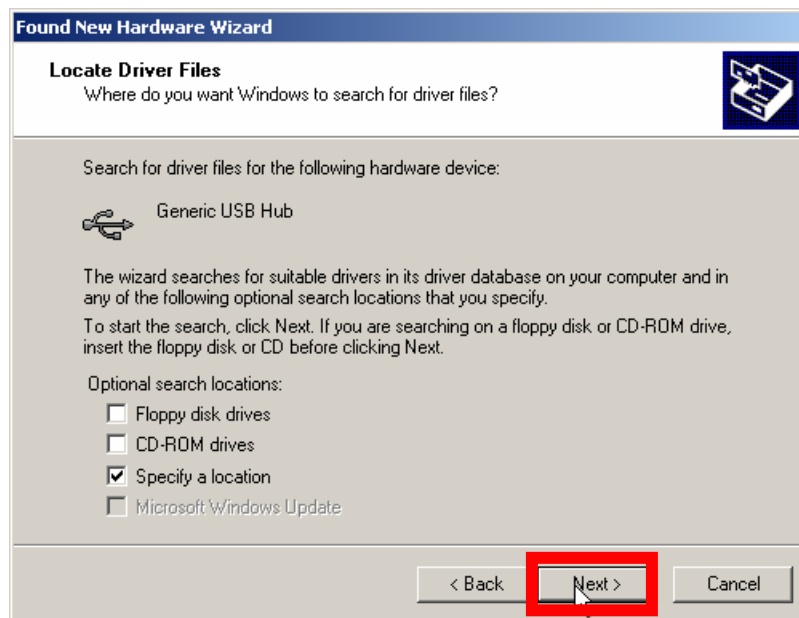
**Note:** Installation may require your Windows® 2000 CD.

## SETUP INSTRUCTIONS

1. Click the **Next** button shown below to proceed.



2. The USB 2.0 driver should come from your computer's system drivers; it is not a part of the docking station's driver. The user must have the computer's system drivers ready and specify their path to the installation wizard. Select Specify a location and click **Next** to proceed.

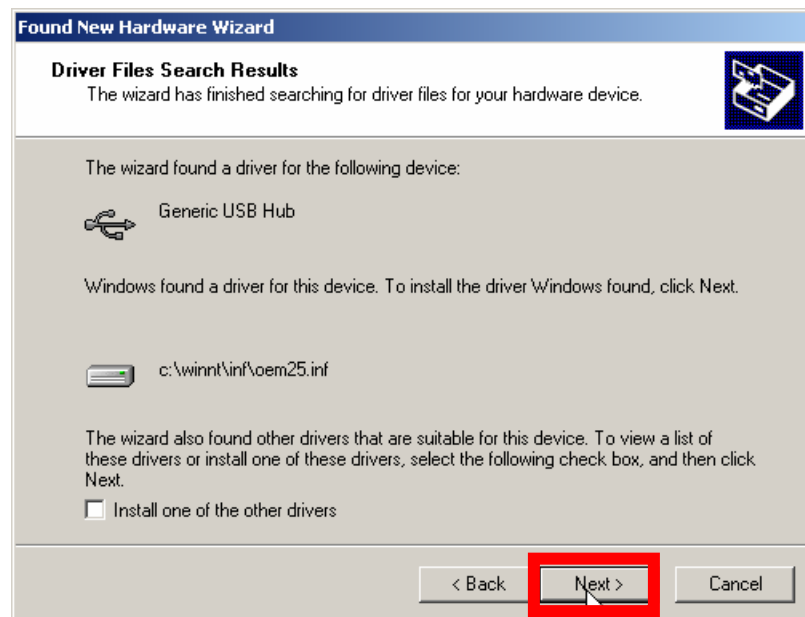


3. Enter "C:\\WINNT\\USB2" as shown below. The specific path may vary according to your system.



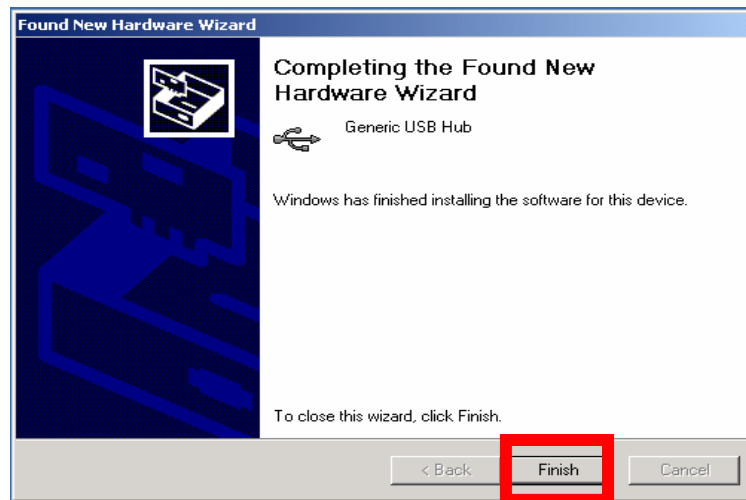
If this path does not work, and you do not know the correct path, then you will need to return to step 2. Select "CD-ROM drives" instead of "Specify a location." You will be prompted to insert your Windows® CD.

4. With the path of USB driver specified, Windows® can find the installation information and start installing the driver. Click the **Next** button to proceed.



## SETUP INSTRUCTIONS

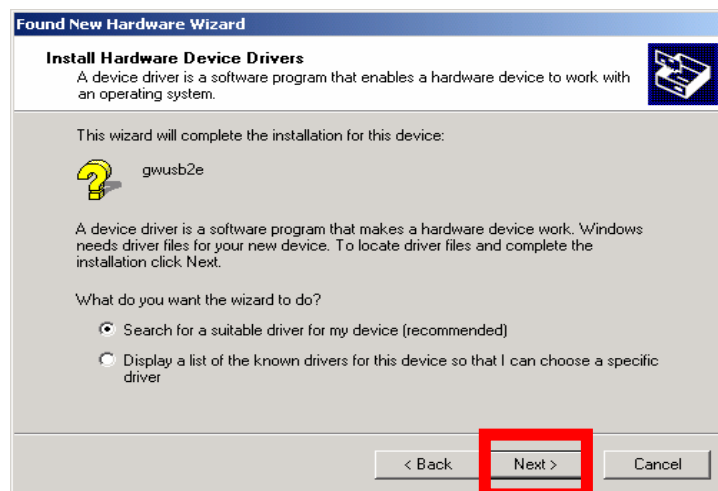
5. Click **Finish** to proceed to the installation of docking station drivers.



## USB Ethernet Adapter Installation in Windows® 2000

The next driver is for the USB Ethernet adapter.

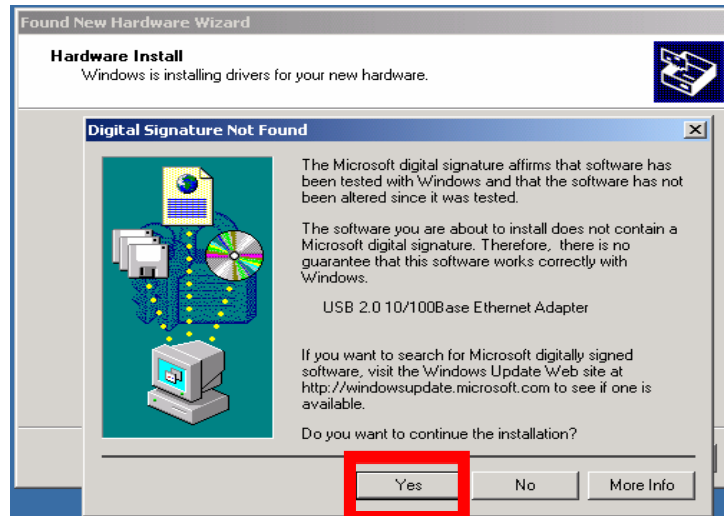
1. Click the **Next** button to proceed:



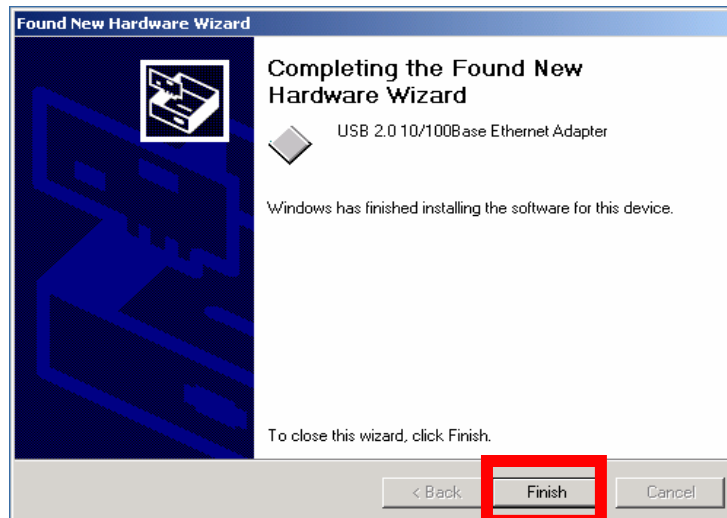


## SETUP INSTRUCTIONS

2. If any warning signs pop up (which may or may not happen, and does not affect the operation of the device), click **Yes** to continue.



3. The USB Ethernet adapter driver is installed. Please click **Finish** to proceed.



## SETUP INSTRUCTIONS

### USB-to-Serial Driver Installation in Windows® 2000

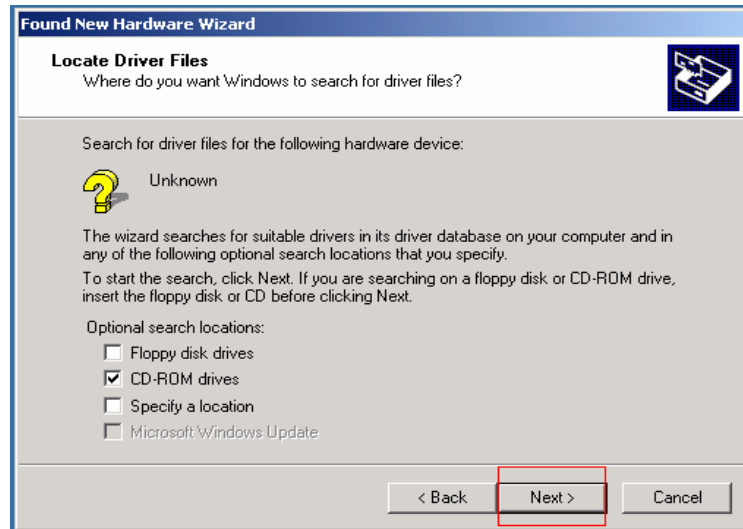
1. Click **Next** to proceed.



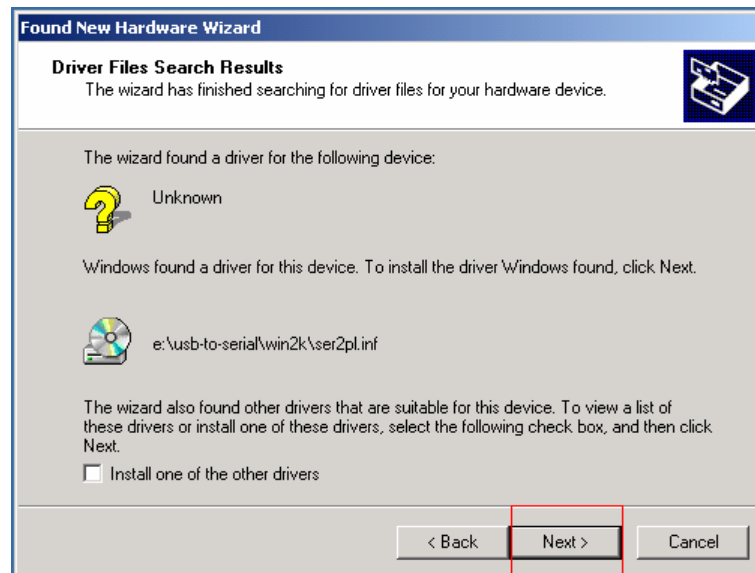
2. Select **Search for a suitable driver for my device** and click **Next** to continue.



3. Select CD-ROM drives and click **Next** to proceed.



4. Click **Next** to continue.



5. Click **Finish** to proceed to the driver installation of next device.

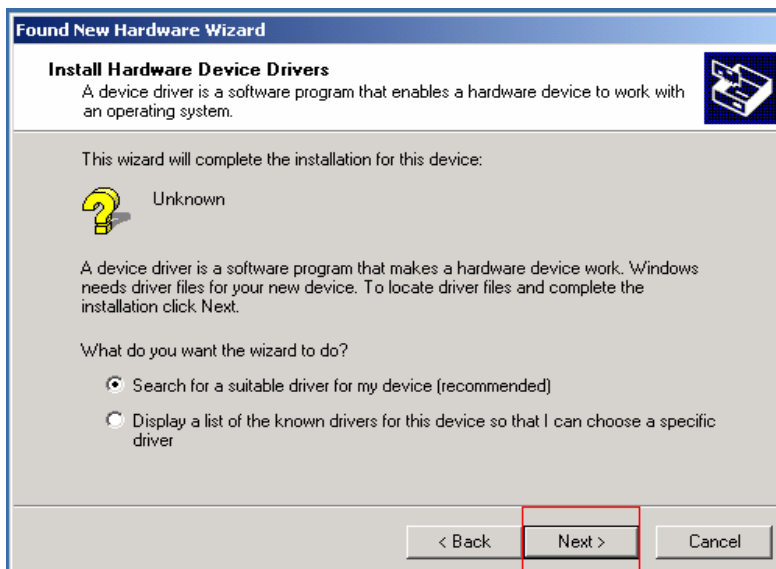
## SETUP INSTRUCTIONS

### Installation in Windows® 2000

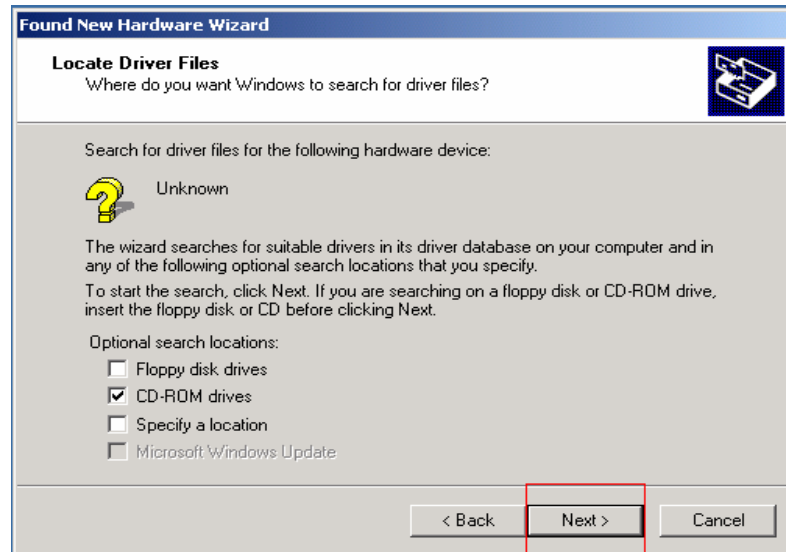
1. Click **Next** to proceed.



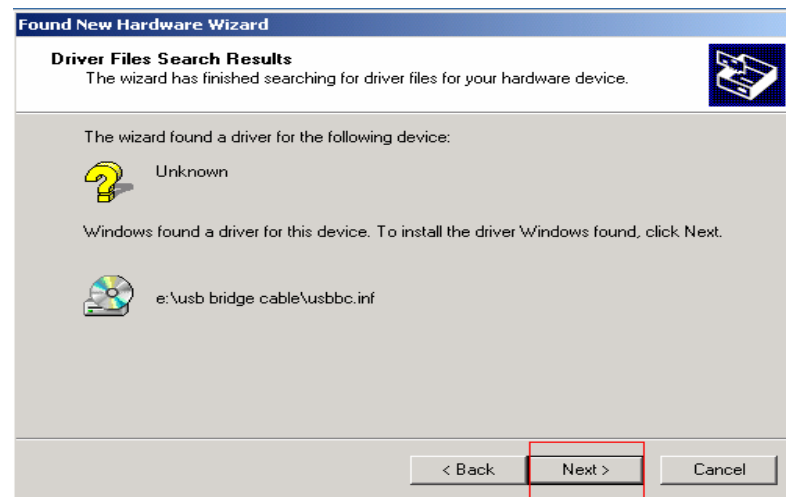
2. Click **Next** to proceed.



3. Select CD-ROM drives and click **Next** to proceed.



4. Click Next to proceed.



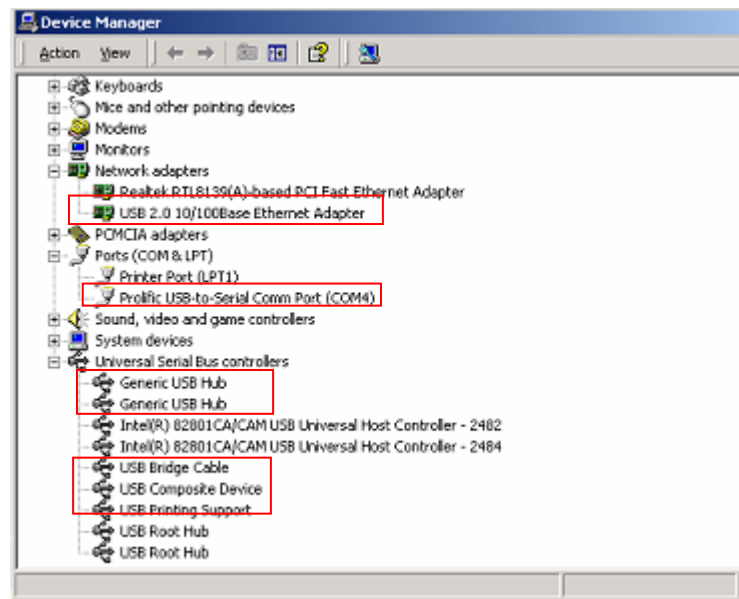
The other drivers for your docking station are provided by the Windows® OS. They will be installed automatically. Wait for the OS to complete the process before performing any other actions.

## SETUP INSTRUCTIONS

### Confirming Installation in Windows® 2000

Once the installation process ends, you can check that it has been installed correctly Select **Start -> Settings -> Control Panel -> System -> Hardware tab -> Device Manager** to confirm that the driver has been installed properly.

In the Device Manager the following items should appear: HID Keyboard Device, HID-compliant mouse, USB2.0 10/100Base Ethernet Adapter, Prolific USB-to-serial Comm Port, Generic USB Hub, USB Bridge Cable(Optional) USB Composite Device, and USB Printing Support (Refer to the figure below).



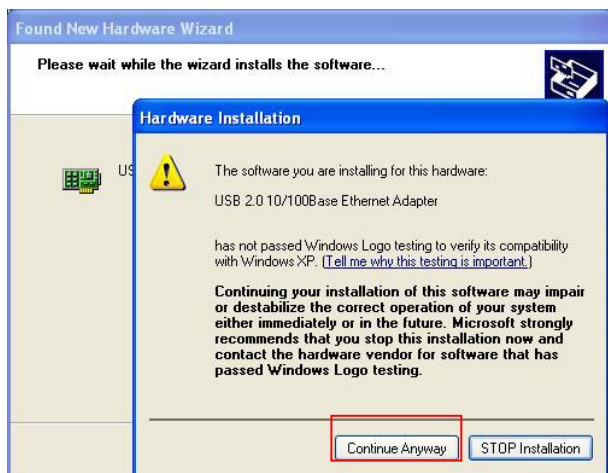
## Software Installation in Windows® XP

For Windows® XP, there are three drivers which need to be installed from the driver CD-ROM: (1) USB-LAN, (2) USB-serial port, and (3) USB PC-to-PC data link. These drivers will be installed in this order. The other drivers are provided by Windows® XP and will be installed automatically. During the installation, the software for the PC-to-PC data link will be installed, too.

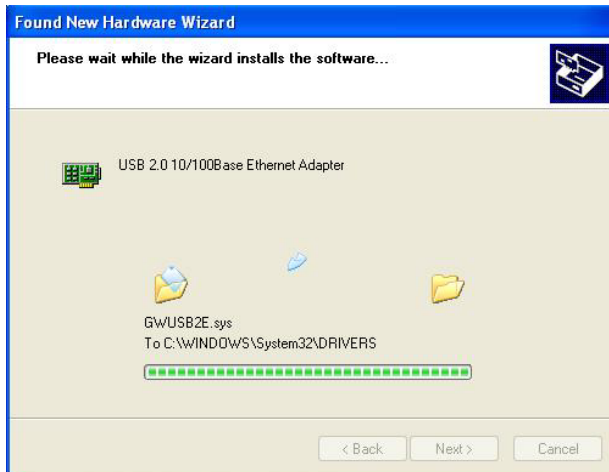
Select **Install the software automatically**, and click **Next** to start the driver installation of USB-LAN. Note that the name (gwusb2e here) of the device may vary due to drivers updates. It will not affect the function and installation of the device.



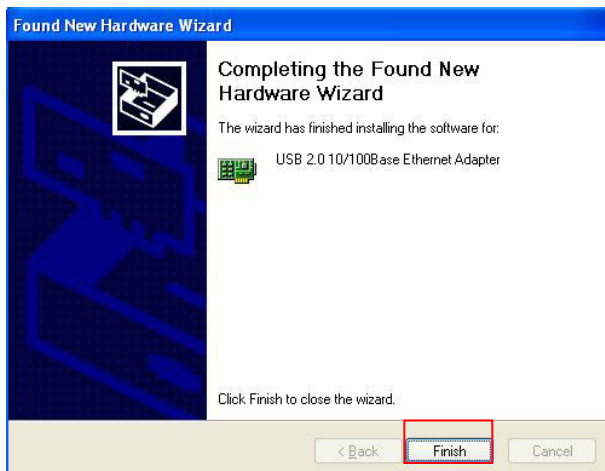
The installation is in progress.



## SETUP INSTRUCTIONS



Click **Finish** to end the wizard for driver of USB-LAN.



The wizard for USB-to-serial-port pops up. Click **Next** to proceed.

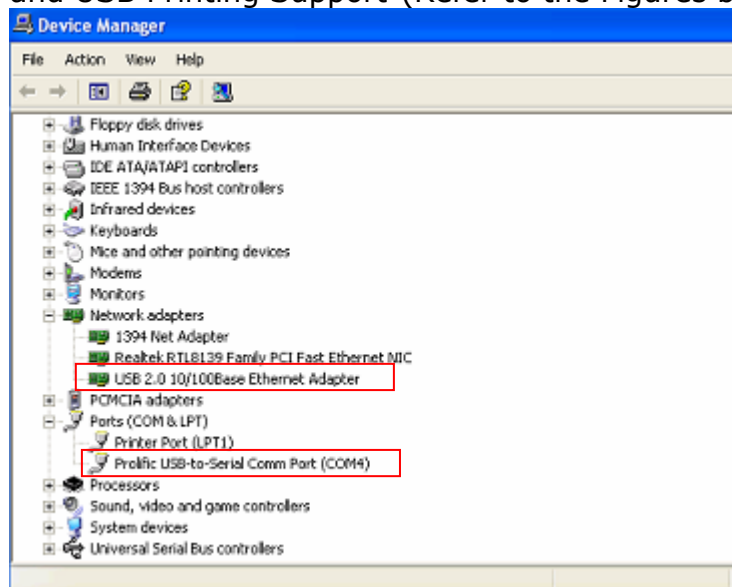




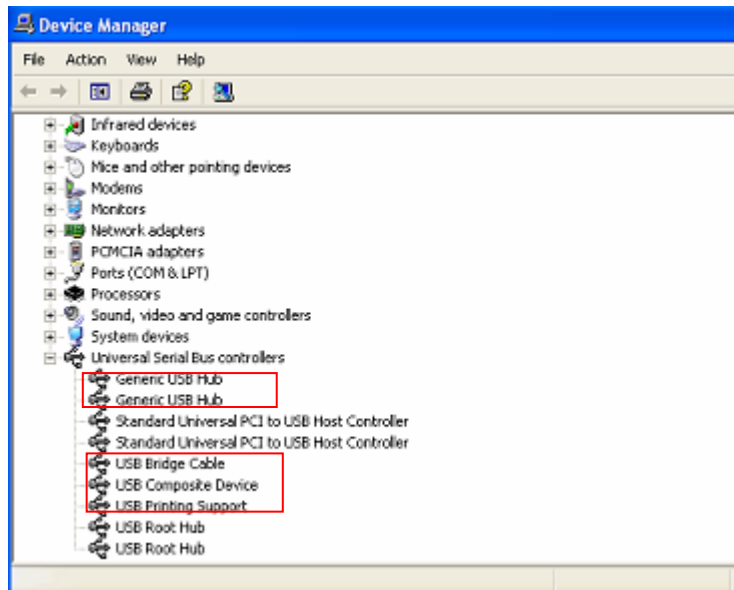
## SETUP INSTRUCTIONS

The drivers for the remaining devices (PS/2 keyboard and mouse, and USB-printer port) are bundled within Windows® OS and will be automatically installed.

Once the installation process ends, you can check the integrity and validity of the installed devices. Use your mouse (or touch-pad) to choose "Start -> Settings -> Control Panel -> Performance and Management -> System -> Hardware tab -> Device Manager" to confirm that the driver has been installed properly (Or point the cursor to the "My computer" icon on the desktop, right-click, select the option "Properties" with a left-click, click the Hardware tab, click Device Manager to show the window. In the Device Manager the following items appear: "HID Keyboard Device, HID-compliant mouse, USB2.0 10/100Base Ethernet Adapter, Prolific USB-to-serial Comm Port, Generic USB Hub, USB Bridge Cable(Optional)USB Composite Device, and USB Printing Support"(Refer to the Figures below).



# SETUP INSTRUCTIONS



## IMPORTANT NOTES:

**USB Ports:** Before you connect a USB device to one of the USB ports of the docking station, follow the device driver installation instructions.

**PS/2 Ports (Keyboard and Mouse port):** PS/2 protocols are loosely specified, and it is possible that you may experience some compatibility issues. However, if the PS/2 keyboard or mouse is IBM PC compatible, it should work with the docking station.

**Serial Port:** The serial port is not a Plug and Play interface. If you connect a serial port device (for example, a modem) to the docking station when your computer is on, you will have to use the Add New Hardware function from the Control Panel. Or you can detach the docking station from your computer and re-attach it.

The USB-to-serial was designed to work with modems or serial devices that have drivers capable of handling “virtual ports”. Older serial mice often only recognize physical ports. Thus, the compatibility of the USB-to-serial interface and serial mice is not guaranteed. There are rare cases where it can work, but the majority of the USB-serial mice are not compatible with the USB-to-serial interface.

**Ethernet Port:** The docking station’s Ethernet port is a USB 2.0-to-fast-Ethernet adaptor, integrated with a USB 2.0 bus 10/100 Ethernet controller.